

جمهورية العراق
وزارة التخطيط
الجهاز المركزي للإحصاء



الأرقام القياسية
لأسعار المستهلك
لشهر
نيسان 2012

مديرية الأرقام القياسية

آيار 2012

2012/

/

. 2012

1945

1939

2007

/

2012

CPI Methodology

Base Year .1

2007

(IHSES)

2003

Products Sample Selection .2

Cut – Off Sampling

25

2007 (IHSES)

25

786

Products

416

%53

633

Varieties

%98

Classification Of Individual

12

446	64	COICOP	Consumption by Purpose	
				33
				9
	.ISIC	International Standardized Industrial Classification		
			<u>Expenditure Classification</u>	<u>.3</u>
Classification of Individual) COICOP	
		12	(Consumption by Purpose	
2digits				
2digits	item or products	1digit	1digit	
	. 7digits		1digit	
			<u>Weighting Diagram()</u>	<u>.4</u>
			. 2007	
COICOP				
			<u>The Formula of Price Index Number</u>	<u>.5</u>
			()	
			<u>Coverage</u>	<u>.6</u>
()				
%67				
			.2007	
			<u>Core Inflation</u>	<u>.7</u>
			()	

=:_____1

(% 142.4) 2012 /

(%1.1)

)

(

(% 0.3 % 0.3 % 0.3 % 0.4 % 0.1 % 2.2 % 0.2 % 1.0)

(

. (% 0.2 % 0.4 % 0.5)

=:_____2

(% 142.4) 2012 /

(% 131.0) 2011

(% 8.7)

)

% 5.9 % 7.4 % 2.7 % 9.7 % 7.3 % 3.9 % 13.3) (

. (% 11.8 % 6.9

2011

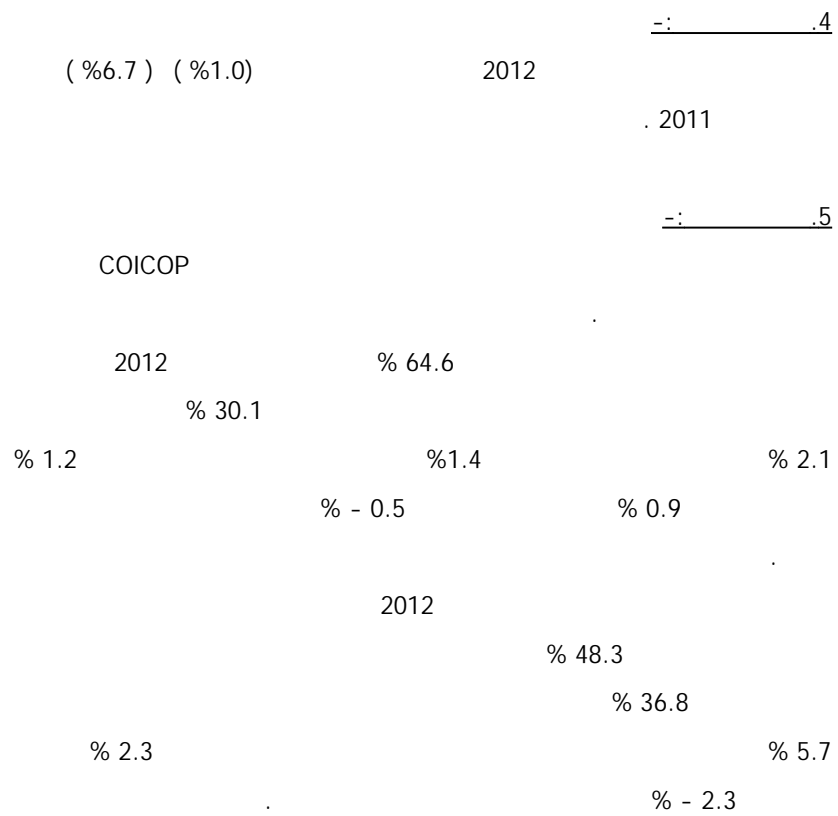
2011 (

. (% 0.8 % 3.5 % 2.5)

=:2007_____3

2012 (%142.4)

.2007 %42.4 2012



2012

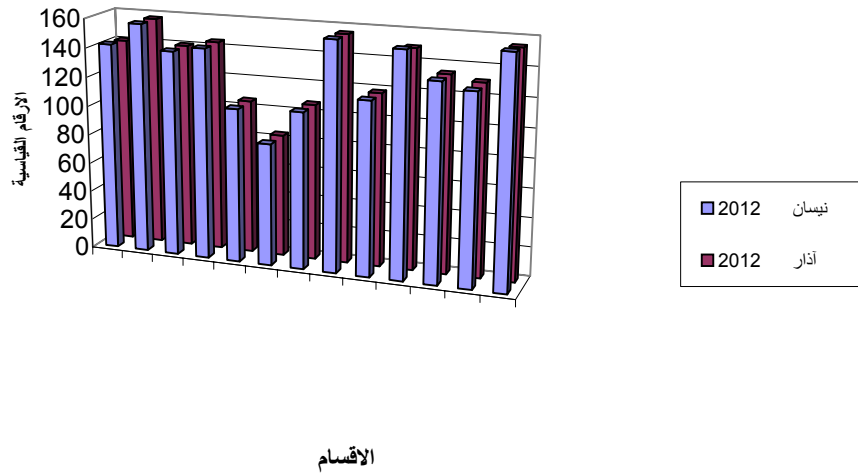
: (1)

Table No. (1) : CPI for Iraq for Apr 2012
(100=2007)

Seq.	Division / Main Group / Sub Group							/	/	
		2011	2012	2012	2012	2011				
01	Food and Non-Alcoholic Beverages	13.3	1.0	156.2	154.6	137.9	30.059			01
011	Food	13.7	1.1	158.2	156.5	139.1	28.754			011
0111	Cereals and their products	0.4	0.1	115.9	115.8	115.4	3.506			0111
0112	Meats	4.4	0.3	161.0	160.5	154.2	6.200			0112
0113	Fish	21.4	2.1	172.0	168.4	141.7	0.992			0113
0114	Yogurt, Cheese and Eggs	11.3	-0.6	122.9	123.7	110.4	4.293			0114
0115	Oils and Fats	4.2	0.2	105.3	105.1	101.1	0.387			0115
0116	Fruits	8.4	-0.4	162.8	163.4	150.2	3.069			0116
0117	Vegetables	29.8	3.0	198.0	192.3	152.6	8.039			0117
0118	Sugar and Sugar Products	7.2	0.9	140.1	138.8	130.7	1.576			0118
0119	Other Food Products	3.3	0.1	135.2	135.0	130.9	0.692			0119
012	Non-Alcoholic Beverages	0.8	0.0	112.3	112.3	111.4	1.305			012
02	Alcoholic Beverages&Tobacco	3.9	-0.5	129.9	130.6	125.0	0.720			02
03	Clothes and Footwear	7.3	0.2	134.5	134.2	125.3	7.330			03
031	Clothes	7.2	0.1	134.7	134.5	125.7	5.775			031
0311	Cloth Fabrics	4.7	0.7	137.2	136.2	131.1	0.716			0311
0312	Sewing Clothes Services	8.4	0.3	151.5	151.1	139.8	0.214			0312
0313	Men's Readymade Wear	9.9	0.2	129.7	129.4	118.0	2.092			0313
0314	Ladies' Readymade Wear	-0.9	0.2	127.4	127.2	128.5	1.836			0314
0315	Children's Readymade Wear	19.9	-0.4	155.7	156.3	129.9	0.892			0315
0316	Clothes Cleaning	1.9	-0.3	135.6	136.0	133.1	0.025			0316
032	Footwear	7.9	0.5	133.6	133.0	123.8	1.555			032
04	Housing, Water,Electricity & LPG	9.7	2.2	153.0	149.7	139.5	31.305			04
0411	Rent	14.1	3.5	163.8	158.3	143.6	21.221			0411
0412	House Maintenance and Services	6.2	-0.8	120.6	121.6	113.6	2.124			0412
0413	Electricity and Water Supply	-3.1	-0.8	243.6	245.6	251.4	2.275			0413
0414	Fuels(Gasolen,kerosene and LPG)	-0.7	-1.2	88.7	89.8	89.3	5.685	()	0414
05	House Supplies , Appliances & Maintenance	2.7	0.1	118.5	118.4	115.4	6.377			05
051	Furniture Equipments	4.0	0.2	120.8	120.6	116.1	2.399			051
052	Home Appliances	1.9	0.0	117.1	117.1	114.9	3.978			052
06	Health	7.4	0.4	156.3	155.7	145.5	2.308			06
07	Transportation	-2.5	0.3	107.1	106.8	109.8	11.086			07
08	Communications	-3.5	-0.4	83.7	84.0	86.7	2.926			08
09	Recreation and Culture	-0.8	-0.2	105.4	105.6	106.3	1.619			09
10	Education	5.9	0.0	144.3	144.3	136.3	0.989			10
11	Restaurants	6.9	0.3	140.7	140.3	131.6	1.403			11
12	Misc. Sevices and Goods	11.8	0.3	157.7	157.2	141.0	3.878			12
00	General Index Number	8.7	1.1	142.4	140.8	131.0	100			00
	Index Number After Exclusion	6.7	1.0	139.9	138.5	131.1	100			

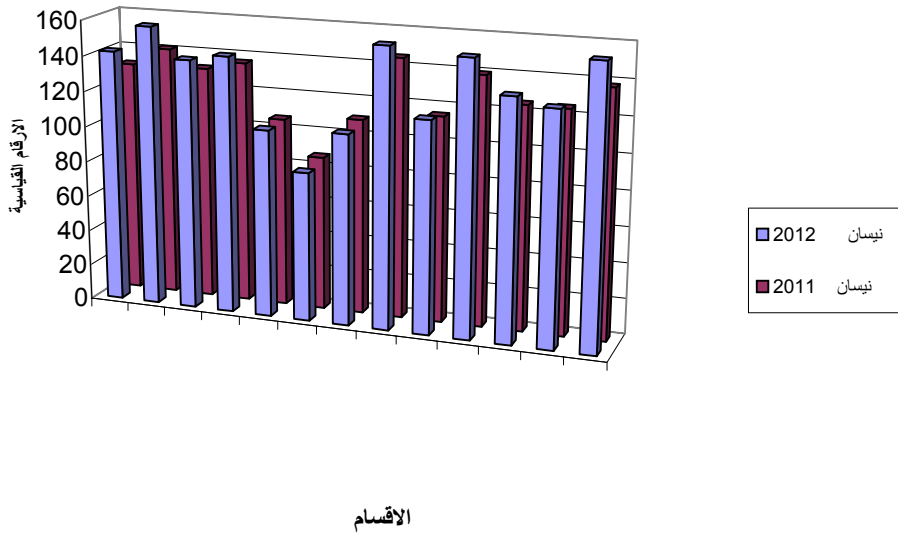
الارقام القياسية لاسعار المستهلك لشهري نيسان وأذار 2012

Consumer Price Indices for Apr & Mar 2012



الارقام القياسية لاسعار المستهلك لشهري نيسان 2012 و نيسان 2011

Consumer Price Indices for Apr 2012 & Apr 2011



2012

: (2)

Table No. (2) :Divisions Contribution to Monthly Rate of Change for Apr 2012

(100=2007)

Seq.	Division	المساهمة في معدل التطور الشهري للرقم القياسي العام %	المساهمة في معدل التغير الشهري للرقم القياسي العام %	معدل التغير الشهري %	نيسان	آذار		
					2012	2012		
01	Food and Non-Alcoholic Beverages	30.1	0.3	1.0	156.2	154.6	30.059	01
02	Alcoholic Beverages&Tobacco	-0.4	0.0	-0.5	129.9	130.6	0.720	02
03	Clothes and Footwear	1.4	0.0	0.2	134.5	134.2	7.330	03
04	Housing, Water,Electricity & LPG	64.6	0.7	2.2	153.0	149.7	31.305	04
05	House Supplies , Appliances & Maintenance	0.4	0.0	0.1	118.5	118.4	6.377	05
06	Health	0.9	0.0	0.4	156.3	155.7	2.308	06
07	Transportation	2.1	0.0	0.3	107.1	106.8	11.086	07
08	Communications	-0.5	0.0	-0.4	83.7	84.0	2.926	08
09	Recreation and Culture	-0.2	0.0	-0.2	105.4	105.6	1.619	09
10	Education	0.0	0.0	0.0	144.3	144.3	0.989	10
11	Restaurants	0.4	0.0	0.3	140.7	140.3	1.403	11
12	Miscellaneous Sevices and Goods	1.2	0.0	0.3	157.7	157.2	3.878	12
	General Index Number	100	1.1	1.1	142.4	140.8	100	00

نيسان 2012

: (3)

Table No. (3) :Divisions Contribution to Annual Rate of Change for Apr 2012

(100=2007)

Seq.	Division	المساهمة في معدل التطور السوي للرقم القياسي العام %	المساهمة في معدل التغير السوي للرقم القياسي العام %	معدل التغير السوي %	نيسان	نيسان		
					2012	2011		
01	Food and Non-Alcoholic Beverages	48.3	4.2	13.3	156.2	137.9	30.059	01
02	Alcoholic Beverages&Tobacco	0.0	0.0	3.9	129.9	125.0	0.720	02
03	Clothes and Footwear	5.7	0.5	7.3	134.5	125.3	7.330	03
04	Housing, Water,Electricity & LPG	36.8	3.2	9.7	153.0	139.5	31.305	04
05	House Supplies , Appliances & Maintenance	2.3	0.2	2.7	118.5	115.4	6.377	05
06	Health	2.3	0.2	7.4	156.3	145.5	2.308	06
07	Transportation	-2.3	-0.2	-2.5	107.1	109.8	11.086	07
08	Communications	-1.1	-0.1	-3.5	83.7	86.7	2.926	08
09	Recreation and Culture	0.0	0.0	-0.8	105.4	106.3	1.619	09
10	Education	1.1	0.1	5.9	144.3	136.3	0.989	10
11	Restaurants	1.1	0.1	6.9	140.7	131.6	1.403	11
12	Miscellaneous Sevices and Goods	5.7	0.5	11.8	157.7	141.0	3.878	12
	General Index Number	100	8.7	8.7	142.4	131.0	100	00

2012

: (4)

Table No. (4) : CPI by Regions for Apr 2012
(100=2007)

Seq.	Division / Main Group / Sub Group				/	/	
		South	Middle	Kurdistan			
01	Food and Non-Alcoholic Beverages	160.4	152.1	163.1			01
011	Food	162.7	154.0	164.9			011
0111	Cereals and their products	117.3	113.1	112.6			0111
0112	Meats	156.6	164.9	157.1			0112
0113	Fish	182.2	159.5	167.4			0113
0114	Yogurt, Cheese and Eggs	123.5	121.6	132.1			0114
0115	Oils and Fats	104.1	102.9	115.4			0115
0116	Fruits	158.9	155.5	195.3			0116
0117	Vegetables	203.4	190.1	214.7			0117
0118	Sugar and Sugar Products	146.4	134.6	149.4			0118
0119	Other Food Products	146.5	128.8	129.9			0119
012	Non-Alcoholic Beverages	106.5	111.5	123.9			012
02	Alcoholic Beverages&Tobacco	127.2	134.9	118.8			02
03	Clothes and Footwear	144.8	125.0	142.0			03
031	Clothes	143.8	125.4	143.1			031
0311	Cloth Fabrics	134.4	135.9	164.4			0311
0312	Sewing Clothes Services	156.1	150.8	150.2			0312
0313	Men's Readymade Wear	144.7	120.6	128.5			0313
0314	Ladies' Readymade Wear	131.3	122.7	131.0			0314
0315	Children's Readymade Wear	176.5	135.2	162.3			0315
0316	Clothes Cleaning	140.2	132.1	137.0			0316
032	Footwear	148.8	123.2	137.2			032
04	Housing, Water,Electricity & LPG	174.2	149.4	132.6			04
0411	Rent	181.4	167.0	130.4			0411
0412	House Maintenance and Services	133.7	106.9	147.4			0412
0413	Electricity and Water Supply	354.8	215.6	198.0			0413
0414	Fuels(Gasolen,kerosene and LPG)	96.7	78.7	108.0	()	0414
05	House Supplies , Appliances & Maintenance	121.9	114.0	127.7			05
051	Furniture Equipments	126.4	114.3	133.1			051
052	Home Appliances	119.3	113.8	123.6			052
06	Health	149.6	153.1	186.1			06
07	Transportation	115.2	102.7	98.1			07
08	Communications	85.5	77.2	101.2			08
09	Recreation and Culture	106.3	104.7	103.6			09
10	Education	147.4	144.4	131.0			10
11	Restaurants	141.0	133.8	155.3			11
12	Misc. Sevices and Goods	151.0	141.3	183.4			12
00	General Index Number	151.6	140.1	136.1			00

. ()

. ()

. ()

: (5)

Table No. (5) : CPI by Regions on Previous Month & Same Month of Previous Year
(100=2007)

Seq.	Division / Main Group / Sub Group	South		Middle		KURDSTAN		/	/	
		2011	2012	2011	2012	2011	2012			
01	Food and Non-Alcoholic Beverages	139.2	157.1	133.1	151.9	149.3	160.0			01
011	Food	140.6	159.2	134.1	153.8	150.6	161.7			011
0111	Cereals and their products	111.5	117.1	115.2	113.1	121.2	112.6			0111
0112	Meats	149.2	155.1	157.1	164.6	150.7	157.5			0112
0113	Fish	155.9	177.0	128.8	156.3	148.4	168.7			0113
0114	Yogurt, Cheese and Eggs	110.8	122.8	109.3	122.8	121.7	134.7			0114
0115	Oils and Fats	100.5	103.2	97.6	103.2	105.3	115.0			0115
0116	Fruits	143.7	161.3	142.0	156.7	168.2	190.1			0116
0117	Vegetables	155.9	193.0	143.3	189.6	180.3	202.2			0117
0118	Sugar and Sugar Products	134.0	147.5	123.7	131.6	145.2	148.8			0118
0119	Other Food Products	142.5	147.1	126.5	128.1	116.5	130.3			0119
012	Non-Alcoholic Beverages	106.2	106.7	111.4	111.3	121.6	123.9			012
02	Alcoholic Beverages&Tobacco	124.2	129.2	129.3	134.9	111.1	118.8			02
03	Clothes and Footwear	132.0	144.3	116.9	124.5	133.2	142.8			03
031	Clothes	131.4	143.5	117.3	124.9	132.0	144.3			031
0311	Cloth Fabrics	118.6	134.2	123.1	134.2	132.0	163.2			0311
0312	Sewing Clothes Services	145.2	155.6	140.3	150.0	130.5	151.9			0312
0313	Men's Readymade Wear	132.1	144.0	116.1	119.9	115.9	131.0			0313
0314	Ladies' Readymade Wear	131.1	131.6	119.0	122.1	135.2	130.8			0314
0315	Children's Readymade Wear	137.6	175.8	115.3	135.4	162.4	166.9			0315
0316	Clothes Cleaning	131.1	140.6	133.3	132.1	137.3	138.9			0316
032	Footwear	134.5	147.7	114.5	122.7	138.3	136.7			032
04	Housing, Water,Electricity & LPG	139.5	166.2	142.5	147.0	123.8	132.7			04
0411	Rent	131.9	169.4	156.7	163.4	116.2	127.3			0411
0412	House Maintenance and Services	125.1	136.7	104.2	106.8	126.3	147.4			0412
0413	Electricity and Water Supply	363.1	354.2	217.7	214.2	224.8	219.8			0413
0414	Fuels(Gasolen,kerosene and LPG)	96.7	97.1	77.5	79.2	118.4	115.0	()	0414
05	House Supplies , Appliances & Maintenance	117.1	121.9	112.5	113.9	122.1	127.2			05
051	Furniture Equipments	119.8	126.3	111.2	114.0	128.1	132.7			051
052	Home Appliances	115.6	119.4	113.2	113.8	117.6	123.1			052
06	Health	142.9	149.3	139.9	152.8	175.5	183.5			06
07	Transportation	116.3	115.4	103.5	102.0	103.0	97.9			07
08	Communications	88.5	86.5	81.5	77.2	99.1	100.5			08
09	Recreation and Culture	107.4	107.0	105.1	104.7	105.1	103.7			09
10	Education	135.0	147.4	137.9	144.4	125.0	130.9			10
11	Restaurants	129.5	141.4	127.7	132.9	139.8	155.3			11
12	Misc. Seviles and Goods	137.8	150.5	130.0	141.2	157.9	181.2			12
00	General Index Number	132.4	148.2	130.1	139.1	128.4	135.2			00

2012

: (6)

Table No. (6) :CPI for Iraq for Apr 2012 by Regions Compared with Previous Month & Same Month of Previous Year
(100=2007)

Seq.	Division / Main Group / Sub Group	South		Middle		KURDSTAN		/	/
		2011	2012	2011	2012	2011	2012		
01	Food and Non-Alcoholic Beverages	15.2	2.1	14.3	0.1	9.2	1.9		01
011	Food	15.7	2.2	14.8	0.1	9.5	2.0		011
0111	Cereals and their products	5.2	0.2	-1.8	0.0	-7.1	0.0		0111
0112	Meats	5.0	1.0	5.0	0.2	4.2	-0.3		0112
0113	Fish	16.9	2.9	23.8	2.0	12.8	-0.8		0113
0114	Yogurt, Cheese and Eggs	11.5	0.6	11.3	-1.0	8.5	-1.9		0114
0115	Oils and Fats	3.6	0.9	5.4	-0.3	9.6	0.3		0115
0116	Fruits	10.6	-1.5	9.5	-0.8	16.1	2.7		0116
0117	Vegetables	30.5	5.4	32.7	0.3	19.1	6.2		0117
0118	Sugar and Sugar Products	9.3	-0.7	8.8	2.3	2.9	0.4		0118
0119	Other Food Products	2.8	-0.4	1.8	0.5	11.5	-0.3		0119
012	Non-Alcoholic Beverages	0.3	-0.2	0.1	0.2	1.9	0.0		012
02	Alcoholic Beverages&Tobacco	2.4	-1.5	4.3	0.0	6.9	0.0		02
03	Clothes and Footwear	9.7	0.3	6.9	0.4	6.6	-0.6		03
031	Clothes	9.4	0.2	6.9	0.4	8.4	-0.8		031
0311	Cloth Fabrics	13.3	0.1	10.4	1.3	24.5	0.7		0311
0312	Sewing Clothes Services	7.5	0.3	7.5	0.5	15.1	-1.1		0312
0313	Men's Readymade Wear	9.5	0.5	3.9	0.6	10.9	-1.9		0313
0314	Ladies' Readymade Wear	0.2	-0.2	3.1	0.5	-3.1	0.2		0314
0315	Children's Readymade Wear	28.3	0.4	17.3	-0.1	-0.1	-2.8		0315
0316	Clothes Cleaning	6.9	-0.3	-0.9	0.0	-0.2	-1.4		0316
032	Footwear	10.6	0.7	7.6	0.4	-0.8	0.4		032
04	Housing, Water,Electricity & LPG	24.9	4.8	4.8	1.6	7.1	-0.1		04
0411	Rent	37.5	7.1	6.6	2.2	12.2	2.4		0411
0412	House Maintenance and Services	6.9	-2.2	2.6	0.1	16.7	0.0		0412
0413	Electricity and Water Supply	-2.3	0.2	-1.0	0.7	-11.9	-9.9		0413
0414	Fuels(Gasolen,kerosene and LPG)	0.0	-0.4	1.5	-0.6	-8.8	-6.1	()	0414
05	House Supplies , Appliances & Maintenance	4.1	0.0	1.3	0.1	4.6	0.4		05
051	Furniture Equipments	5.5	0.1	2.8	0.3	3.9	0.3		051
052	Home Appliances	3.2	-0.1	0.5	0.0	5.1	0.4		052
06	Health	4.7	0.2	9.4	0.2	6.0	1.4		06
07	Transportation	-0.9	-0.2	-0.8	0.7	-4.8	0.2		07
08	Communications	-3.4	-1.2	-5.3	0.0	2.1	0.7		08
09	Recreation and Culture	-1.0	-0.7	-0.4	0.0	-1.4	-0.1		09
10	Education	9.2	0.0	4.7	0.0	4.8	0.1		10
11	Restaurants	8.9	-0.3	4.8	0.7	11.1	0.0		11
12	Misc. Seviles and Goods	9.6	0.3	8.7	0.1	16.1	1.2		12
00	General Index Number	14.5	2.3	7.7	0.7	6.0	0.7		00

Table No. (7) : CPI by Governorates for

Apr 2012

2012

: (7)

(100=2007)

Basrah	Missan	Thi- Qar	Al-Muthana	Al-Qadisiya	Al-Najaf	Wasit	Kerbela	Babil	Salah Al-Deen	Baghdad	Al-anbar	Diala	Kirkuk	Nineveh	Duhouk	Erbil	Sulaimaniya	/	/
166.5	170.4	164.3	168.2	161.0	166.5	141.4	155.8	153.5	162.5	145.3	168.3	154.6	155.7	155.7	163.9	169.5	158.8		01
169.0	172.3	167.6	171.0	162.7	169.2	142.8	157.2	155.6	165.6	146.9	170.4	156.3	157.2	158.0	165.7	171.1	160.8		011
129.6	117.6	111.4	120.1	121.7	109.5	104.9	126.2	107.8	125.3	105.0	133.0	111.4	139.9	113.2	123.4	107.0	108.5		0111
156.5	151.1	162.1	191.6	144.7	148.9	151.5	155.7	160.8	170.1	167.7	165.1	157.1	176.6	156.8	169.6	152.4	160.4		0112
245.7	183.4	153.6	175.7	143.0	172.0	162.6	149.4	210.5	236.7	158.8	156.3	152.5	190.5	132.6	170.4	155.7	176.8		0113
135.3	131.6	109.4	116.4	115.2	124.7	106.2	128.3	131.7	130.3	122.2	118.1	114.7	129.5	122.2	146.9	131.1	127.9		0114
112.0	113.8	100.7	100.9	102.2	104.1	108.3	104.0	103.0	135.8	100.2	115.7	93.5	115.5	104.2	113.5	110.9	124.8		0115
152.4	186.0	184.3	160.9	173.1	186.5	137.5	139.8	136.7	163.3	149.9	161.8	159.1	157.2	157.6	178.2	225.2	176.7		0116
182.5	228.9	230.4	206.3	217.9	239.2	166.8	197.2	181.6	202.8	172.4	217.0	198.7	174.7	219.7	203.8	225.1	212.6		0117
185.5	129.8	137.3	136.2	142.2	122.5	148.8	133.6	133.9	128.2	133.0	141.1	134.7	115.3	141.7	152.0	153.8	145.2		0118
198.4	189.8	129.3	150.5	141.9	140.5	97.3	131.4	128.6	127.7	126.9	142.5	114.0	147.7	126.1	124.8	161.2	116.5		0119
114.9	114.7	97.8	101.0	117.8	98.8	103.5	106.6	104.0	111.9	111.1	116.9	109.6	120.0	108.0	125.6	129.5	120.0		012
145.0	141.2	100.0	114.9	114.5	114.5	131.0	153.6	129.8	100.0	141.2	135.8	131.2	108.3	142.2	115.0	101.1	134.1		02
178.7	158.5	114.4	139.1	129.8	167.7	124.5	142.9	133.4	154.9	107.7	132.3	119.8	150.1	148.9	135.8	151.3	134.3		03
174.1	161.3	115.2	140.9	123.9	172.4	123.5	139.3	132.2	155.5	107.0	134.6	119.2	155.1	150.7	136.4	156.3	131.2		031
148.9	161.3	84.7	110.6	119.3	206.8	112.1	143.4	110.2	177.7	116.9	114.5	72.9	207.2	159.4	181.6	200.8	116.3		0311
170.2	189.0	143.6	117.1	125.8	163.0	129.1	135.8	187.3	149.3	131.9	128.5	155.7	265.4	187.5	122.4	179.3	131.9		0312
170.2	150.4	119.8	142.5	137.1	158.9	131.7	137.3	135.2	146.8	109.5	142.5	118.2	128.4	126.8	110.0	147.2	115.3		0313
173.5	148.9	114.7	140.6	108.5	143.9	114.0	121.3	112.7	157.3	104.8	125.0	116.2	159.4	140.4	130.6	125.1	136.9		0314
207.1	196.0	121.0	171.5	133.4	240.5	131.2	175.2	212.7	156.0	97.8	145.7	150.2	173.1	209.0	177.7	135.8	179.9		0315
	202.1	99.6	166.1	139.7	180.0	121.1	158.1	116.5	112.9	144.4	145.8	-	125.6	104.0	114.5	161.3	123.3		0316
195.4	147.8	111.4	131.5	155.5	151.7	128.5	157.4	138.2	153.0	109.8	125.1	122.1	134.3	141.5	133.2	128.9	146.3		032
228.3	129.9	183.0	145.1	150.3	155.0	140.4	133.3	159.8	118.5	120.7	172.9	251.4	164.6	163.8	134.0	142.8	122.2		04
249.6	126.9	180.6	140.7	142.5	162.1	144.8	129.0	170.7	111.0	130.0	213.8	312.3	157.3	182.7	114.2	150.7	118.2		0411
192.2	133.0	113.2	113.3	117.4	122.0	105.9	129.6	103.9	115.1	102.4	106.4	102.5	118.4	98.7	105.7	174.4	142.8		0412
536.7	220.1	564.7	628.9	342.2	248.6	183.8	280.9	322.1	334.1	179.6	220.8	210.2	393.7	312.1	449.6	87.8	209.8		0413
85.3	96.1	105.1	85.6	106.2	90.3	97.6	94.6	108.8	92.3	71.5	79.6	89.7	110.1	85.2	104.5	106.4	101.9	()	0414
139.6	122.8	109.5	117.9	114.7	131.6	108.5	117.1	119.6	121.6	107.8	114.5	116.3	124.5	125.8	125.7	131.4	119.1		05
158.6	129.9	116.3	119.0	109.0	125.6	109.0	120.7	124.6	122.6	102.7	121.3	123.0	116.0	132.1	147.4	143.7	112.6		051
133.1	119.5	104.9	117.2	118.9	135.7	108.3	115.1	115.2	121.0	110.1	110.5	112.8	129.5	121.4	113.9	122.9	124.5		052
174.1	143.5	140.0	128.8	129.5	135.7	124.4	144.7	154.8	192.7	151.6	171.4	119.9	194.4	144.2	159.9	252.6	158.7		06
123.2	131.3	104.8	123.8	104.0	142.3	126.1	106.9	111.3	107.8	101.9	119.5	107.3	109.7	99.3	95.2	94.4	122.8		07
84.3	96.8	70.2	96.5	83.5	91.5	81.3	89.9	91.5	74.3	77.6	99.3	84.0	90.2	71.9	96.3	96.3	108.3		08
110.0	114.6	101.8	99.8	108.4	116.5	109.0	102.4	104.0	94.8	109.2	101.1	116.4	100.2	93.9	113.4	107.3	98.7		09
172.0	205.9	140.7	130.2	120.5	143.6	107.5	145.2	137.5	109.8	126.5	174.2	147.4	170.1	170.8	134.3	150.1	121.0		10
153.5	138.5	125.8	164.5	117.0	112.2	149.4	157.2	131.1	167.8	130.8	182.3	123.0	154.2	120.7	125.3	162.3	160.6		11
164.8	146.5	115.6	140.3	166.2	151.2	144.0	164.8	170.9	162.3	121.2	144.7	139.4	153.2	141.9	162.4	196.8	179.9		12
176.0	144.9	150.9	144.3	139.3	150.7	133.0	137.4	142.8	137.2	125.8	158.8	182.9	150.2	144.3	133.1	141.4	136.0		00

(100=2007)

Seq.	Division / Main Group / Sub Group															/	/
		Average	Dec	Nov	Oct	Sep	Aug	Jul	Jun	May	Apr	Mar	Feb	Jan	weights		
01	Food and Non-Alcoholic Beverages	150.6									156.2	154.6	146.6	144.8	30.059		01
011	Food	152.3									158.2	156.5	148.2	146.3	28.754		011
0111	Cereals and their products	115.7									115.9	115.8	115.6	115.4	3.506		0111
0112	Meats	160.5									161.0	160.5	160.3	160.2	6.200		0112
0113	Fish	165.9									172.0	168.4	162.2	161.1	0.992		0113
0114	Yogurt, Cheese and Eggs	123.2									122.9	123.7	123.0	123.2	4.293		0114
0115	Oils and Fats	105.1									105.3	105.1	105.0	105.0	0.387		0115
0116	Fruits	159.6									162.8	163.4	156.7	155.4	3.069		0116
0117	Vegetables	179.3									198.0	192.3	166.5	160.4	8.039		0117
0118	Sugar and Sugar Products	138.9									140.1	138.8	138.4	138.3	1.576		0118
0119	Other Food Products	135.3									135.2	135.0	135.5	135.6	0.692		0119
012	Non-Alcoholic Beverages	112.3									112.3	112.3	112.4	112.2	1.305		012
02	Alcoholic Beverages&Tobacco	130.8									129.9	130.6	131.4	131.2	0.720		02
03	Clothes and Footwear	133.8									134.5	134.2	133.3	133.1	7.330		03
031	Clothes	134.1									134.7	134.5	133.7	133.4	5.775		031
0311	Cloth Fabrics	136.6									137.2	136.2	137.1	135.9	0.716		0311
0312	Sewing Clothes Services	149.6									151.5	151.1	148.6	147.1	0.214		0312
0313	Men's Readymade Wear	129.1									129.7	129.4	128.9	128.4	2.092		0313
0314	Ladies' Readymade Wear	126.8									127.4	127.2	126.3	126.2	1.836		0314
0315	Children's Readymade Wear	155.2									155.7	156.3	154.1	154.8	0.892		0315
0316	Clothes Cleaning	135.8									135.6	136.0	135.7	135.7	0.025		0316
032	Footwear	132.6									133.6	133.0	131.9	132.0	1.555		032
04	Housing, Water,Electricity & LPG	150.5									153.0	149.7	149.8	149.6	31.305		04
0411	Rent	159.7									163.8	158.3	158.3	158.3	21.221		0411
0412	House Maintenance and Services	120.9									120.6	121.6	121.1	120.2	2.124		0412
0413	Electricity and Water Supply	245.4									243.6	245.6	246.3	246.2	2.275		0413
0414	Fuels(Gasolen,kerosene and LPG)	89.5									88.7	89.8	90.0	89.4	5.685	()	0414
05	House Supplies , Appliances & Maintenance	118.2									118.5	118.4	118.2	117.7	6.377		05
051	Furniture Equipments	120.4									120.8	120.6	120.4	119.7	2.399		051
052	Home Appliances	116.9									117.1	117.1	116.9	116.5	3.978		052
06	Health	155.5									156.3	155.7	155.3	154.6	2.308		06
07	Transportation	107.0									107.1	106.8	106.9	107.0	11.086		07
08	Communications	84.2									83.7	84.0	84.2	84.7	2.926		08
09	Recreation and Culture	105.5									105.4	105.6	105.6	105.5	1.619		09
10	Education	144.2									144.3	144.3	144.2	144.1	0.989		10
11	Restaurants	139.7									140.7	140.3	139.0	138.6	1.403		11
12	Miscellaneous Sevices and Goods	157.0									157.7	157.2	158.6	154.3	3.878		12
00	General Index Number	139.8									142.4	140.8	138.4	137.5	100		00
	Index Number After Exclusion	138.7									139.9	138.5	138.3	138.0	100		