

Foreword

Central Statistical Organization / Index Numbers Department has the pleasure to publish the Consumer Price Index report for April 2012 within COSIT work plan for 2012. The Consumer Price Index is considered as an indicator for general level of prices in a country also it could be used as a deflator to estimate fixed prices for some important economical indicators. Different countries concern about compiling specific, expressive numbers for this indicator as it has a direct contact with the individual's luxury and living conditions. The first index number for living condition in Iraq has been compiled on 1945 by the main office of statistics in the ministry of economics and used 1939 as a base year for Baghdad city. Then work continued in preparing this number later on by the Ministry of Planning\ The Central Organization for Statistics, the most recent one depended on the base year 2007 as it is the year in which the latest Household Social and Economical Survey has been conducted in Iraq. Index Numbers Department presently issues monthly report of Consumer Price Index by the mentioned base year .

Index Numbers Department
May 2012

CPI Methodology

1. Base Year

The year 2007 has been chosen to be the base year for (CPI) considering that it is the year in which Iraqi Household Social and Economical Survey (IHSES) was conducted, consequently, it has been taken as a base year in pricing goods and services in the consumer price index structure. Also it presents the period after 2003 which witnessed great changes in the household living conditions and the structure of consumption expenditure and the economical state in the country as a whole.

2. Products Sample Selection

To select the products basket for consumer price index, the cut-off sampling method has been used. The sample included all products with monthly individual average expenditure on exceeded 25 ID on the Iraqi Household Social and Economical Survey (IHSES) on 2007. After selecting the sample some products which have not been included in the sample but considered important from the consumer's point of view have been added ,at the same time some products excluded which were not considered to be important to the consumer although they appeared with expenditure exceeds 25 ID. Products sample included 416 products out of 786 products on (IHSES), so the sample's size account for 53% of the total number of products reported in the Household Economical and Social Survey ,while the individual's monthly expenditure on products included in the sample account for more than 98% of his expenditure on all products, the number of chosen items (categories) mounted to 633 items distributed on 12

divisions according to Classification Of Individual Consumption by Purpose briefly COICOP & 64 sub- groups compared with 446 items for the old basket divided into 9 main groups(or divisions) & 33 sub-groups due to the International Standardized Classification briefly ISIC.

3. Expenditure Classification

The COICOP Classification (Classification of Individual Consumption by Purpose) was used which consists of 12 division and it has been recommended to use for the International Comparisons Programme purposes; this Classification has been relied on according to Iraq's requirements where the biggest groups are divisions (2-digits) then the main groups (1-digit) and sub-groups (1-digit) and products (2-digits) and finally the categories or variants (1-digit). So the classification has relied on (7-digits).

4. Weighting Diagram

As the different products differ in its relative importance , this entails that the relative importance must be calculated for every commodity and service by depending on the individual's monthly expenditure average which is taken from Household Economical and Social Survey in Iraq for 2007. As some products have been excluded from the main and sub- groups according to COICOP classification and to maintain the relative importance of these groups, expenditure value of excluded products has been distributed relatively on other products included in the basket.

5.The Formula of Price Index Number

Laspseyr's Formula has been used which depends the base year weights in calculating Index Numbers for main groups, sub-groups and the General Index Number.

6. Coverage

Prices being collected from each governorate center and from the most important Qhada due to population size (except the center Qhada). Knowing that governorates have been consulted in Qhada selection taking in consideration the price difference between administrative units markets and the cost and ability to access the administrative unit. CPI covers the urban area of Iraq account for 67% of total population on 2007.

7. Core Inflation

Core Inflation has been calculated after excluding some volatile products prices presented in Fruit and Vegetable sub-groups in Food and Non- Alcoholic Beverages and the fuel products (kerosene, LPG) in Housing division.

Inflation Rates Analysis

1.Monthly Inflation Rates:-

Consumer price index for April 2012 in Iraq has amounted to (142.4%) increasing at a rate of (1.1%) as compared with the previous month due to the relative increase in prices of the divisions of (Food and Non-Alcoholic Beverages, Clothes and Footwear,Housing, House Supplies,appliances and Maintenance, Health, Transportation , Restaurants and Miscellaneous Services and goods) at the monthly rates of (1.0%, 0.2%, 2.2%,0.1% , 0.4%, 0.3%, 0.3%, 0.3%) respectively.

The reason behind prices increase in the division of Food and Non-Alcoholic Beverages is generally due to the increase in the prices of Cearls and their products ,Meats , Fish , Oils and Fats, Sugar and Sugar Products and Other Food Products ,and especially due to the increase in Vegetables prices. As for (Alcoholic Beverages and Tobacco, Communication and Recreation and Culture) divisions have registered a decrease as compared with the previous month at the rates (0.5%, 0.4%, 0.2%) .

2.Annual Inflation Rates :-

Consumer price index for April 2012 in Iraq has amounted to (142.4%) increasing at a rate of (8.7%) as compared with April 2011 which amounted to (131.0%) due to the increase in the index numbers of the divisions (Food and Non-Alcoholic Beverages, Alcoholic Beverages and Tobacco, Clothes and Footwear, Housing, House Supplies ,appliances and Maintenance, Health, Education, Restaurants and Miscellaneous Services and goods) at the rates of (13.3%, 3.9%,7.3%, 9.7%,2.7%, 7.4%,5.9% ,6.9%, 11.8%) respectively.

The reason of this increase belongs to the increase of some goods as compared with April 2011, where in the division of Clothes and Footwear prices of Cloth Fabrics , Sewing Clothes Services, Men's Readymade Wear ,Children's Readymade Wear, Clothes Cleaning and Footwear increased ,while in the division of Housing the prices of rent have increased in addition to the increase in House Maintenance and Services in addition to the increase in Fruits and Vegetables prices.

As for (Transportation, Communication and Recreation and Culture) divisions registered decrease as compared with April 2011 at the rates of (2.5%, 3.5%, 0.8%).

3.Inflation Averages as Compared with 2007:-

Consumer price index for April 2012 has amounted to (142.4%), which means that the general level for prices in April 2012 increased at a rate of (42.4%) as compared with the year of 2007.

4.Core Inflation :-

The core inflation for April 2012 amounted to (1.0%) as compared with the previous month and (6.7%) as compared with April 2011.

5.Contribution Rates :-

The contribution rates are defined as the relative importance of COICOP divisions indices which take in consideration the corresponding weights.

The contribution rate on the monthly overall change rate for April 2012 amounted to (64.6%) for the division of Housing recording the highest Contribution rate then the division of Food and Non-Alcoholic Beverages at a rate of (30.1%) then the division of Transportation at a rate of (2.1%) then Clothes and Footwear division at a rate of (1.4%) then the division of Miscellaneous Services and goods at a rate of 1.2%, then the division of Health at a rate of (0.9%) and Communication division at a rate of (0.5%). While the Contribution rates are less for other divisions.

As for the annual contribution rates for April 2012, the division of Food and Non-Alcoholic Beverages recorded the highest contribution rate amounted to (48.3%) as a result of the high weight and prices rates for this division, then the division of Housing at a rate of (36.8%), then the divisions of Clothes and Footwear and Miscellaneous Services and goods at the same rate of (5.7%), then House Supplies, appliances and Maintenance and Health divisions at the same rate of 2.3% and Transportation division at the a rate of (-2.3%). While the Contribution rates are less for other divisions.

2012

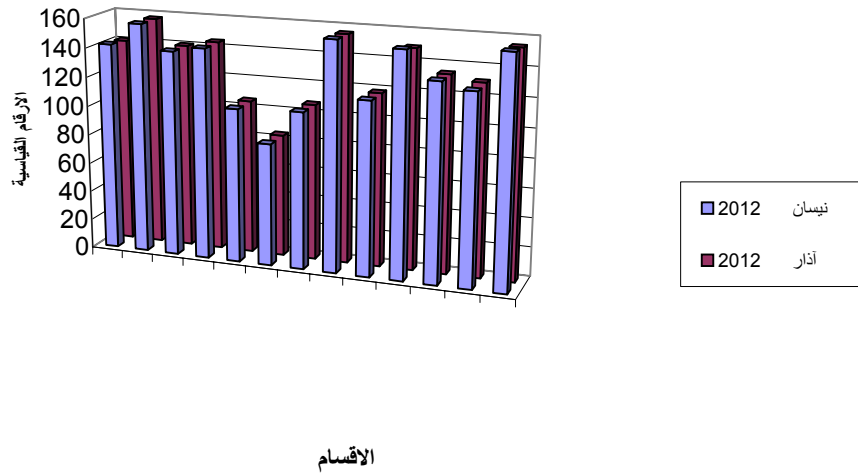
: (1)

Table No. (1) : CPI for Iraq for Apr 2012
(100=2007)

Seq.	Division / Main Group / Sub Group							/	/	
		2011	2012	2012	2012	2011				
01	Food and Non-Alcoholic Beverages	13.3	1.0	156.2	154.6	137.9	30.059			01
011	Food	13.7	1.1	158.2	156.5	139.1	28.754			011
0111	Cereals and their products	0.4	0.1	115.9	115.8	115.4	3.506			0111
0112	Meats	4.4	0.3	161.0	160.5	154.2	6.200			0112
0113	Fish	21.4	2.1	172.0	168.4	141.7	0.992			0113
0114	Yogurt, Cheese and Eggs	11.3	-0.6	122.9	123.7	110.4	4.293			0114
0115	Oils and Fats	4.2	0.2	105.3	105.1	101.1	0.387			0115
0116	Fruits	8.4	-0.4	162.8	163.4	150.2	3.069			0116
0117	Vegetables	29.8	3.0	198.0	192.3	152.6	8.039			0117
0118	Sugar and Sugar Products	7.2	0.9	140.1	138.8	130.7	1.576			0118
0119	Other Food Products	3.3	0.1	135.2	135.0	130.9	0.692			0119
012	Non-Alcoholic Beverages	0.8	0.0	112.3	112.3	111.4	1.305			012
02	Alcoholic Beverages&Tobacco	3.9	-0.5	129.9	130.6	125.0	0.720			02
03	Clothes and Footwear	7.3	0.2	134.5	134.2	125.3	7.330			03
031	Clothes	7.2	0.1	134.7	134.5	125.7	5.775			031
0311	Cloth Fabrics	4.7	0.7	137.2	136.2	131.1	0.716			0311
0312	Sewing Clothes Services	8.4	0.3	151.5	151.1	139.8	0.214			0312
0313	Men's Readymade Wear	9.9	0.2	129.7	129.4	118.0	2.092			0313
0314	Ladies' Readymade Wear	-0.9	0.2	127.4	127.2	128.5	1.836			0314
0315	Children's Readymade Wear	19.9	-0.4	155.7	156.3	129.9	0.892			0315
0316	Clothes Cleaning	1.9	-0.3	135.6	136.0	133.1	0.025			0316
032	Footwear	7.9	0.5	133.6	133.0	123.8	1.555			032
04	Housing, Water,Electricity & LPG	9.7	2.2	153.0	149.7	139.5	31.305			04
0411	Rent	14.1	3.5	163.8	158.3	143.6	21.221			0411
0412	House Maintenance and Services	6.2	-0.8	120.6	121.6	113.6	2.124			0412
0413	Electricity and Water Supply	-3.1	-0.8	243.6	245.6	251.4	2.275			0413
0414	Fuels(Gasolen,kerosene and LPG)	-0.7	-1.2	88.7	89.8	89.3	5.685	()	0414
05	House Supplies , Appliances & Maintenance	2.7	0.1	118.5	118.4	115.4	6.377			05
051	Furniture Equipments	4.0	0.2	120.8	120.6	116.1	2.399			051
052	Home Appliances	1.9	0.0	117.1	117.1	114.9	3.978			052
06	Health	7.4	0.4	156.3	155.7	145.5	2.308			06
07	Transportation	-2.5	0.3	107.1	106.8	109.8	11.086			07
08	Communications	-3.5	-0.4	83.7	84.0	86.7	2.926			08
09	Recreation and Culture	-0.8	-0.2	105.4	105.6	106.3	1.619			09
10	Education	5.9	0.0	144.3	144.3	136.3	0.989			10
11	Restaurants	6.9	0.3	140.7	140.3	131.6	1.403			11
12	Misc. Sevices and Goods	11.8	0.3	157.7	157.2	141.0	3.878			12
00	General Index Number	8.7	1.1	142.4	140.8	131.0	100			00
	Index Number After Exclusion	6.7	1.0	139.9	138.5	131.1	100			

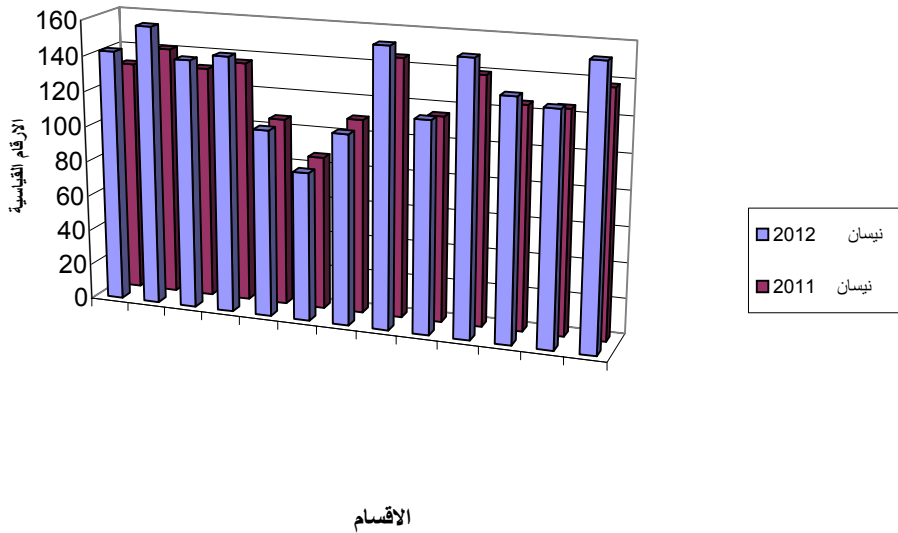
الارقام القياسية لاسعار المستهلك لشهري نيسان وأذار 2012

Consumer Price Indices for Apr & Mar 2012



الارقام القياسية لاسعار المستهلك لشهري نيسان 2012 و نيسان 2011

Consumer Price Indices for Apr 2012 & Apr 2011



2012

: (2)

Table No. (2) :Divisions Contribution to Monthly Rate of Change for Apr 2012

(100=2007)

Seq.	Division	المساهمة في معدل التطور الشهري للرقم القياسي العام %	المساهمة في معدل التغير الشهري للرقم القياسي العام %	معدل التغير الشهري %	نيسان	آذار		
					2012	2012		
01	Food and Non-Alcoholic Beverages	30.1	0.3	1.0	156.2	154.6	30.059	01
02	Alcoholic Beverages&Tobacco	-0.4	0.0	-0.5	129.9	130.6	0.720	02
03	Clothes and Footwear	1.4	0.0	0.2	134.5	134.2	7.330	03
04	Housing, Water,Electricity & LPG	64.6	0.7	2.2	153.0	149.7	31.305	04
05	House Supplies , Appliances & Maintenance	0.4	0.0	0.1	118.5	118.4	6.377	05
06	Health	0.9	0.0	0.4	156.3	155.7	2.308	06
07	Transportation	2.1	0.0	0.3	107.1	106.8	11.086	07
08	Communications	-0.5	0.0	-0.4	83.7	84.0	2.926	08
09	Recreation and Culture	-0.2	0.0	-0.2	105.4	105.6	1.619	09
10	Education	0.0	0.0	0.0	144.3	144.3	0.989	10
11	Restaurants	0.4	0.0	0.3	140.7	140.3	1.403	11
12	Miscellaneous Sevices and Goods	1.2	0.0	0.3	157.7	157.2	3.878	12
	General Index Number	100	1.1	1.1	142.4	140.8	100	00

نيسان 2012

: (3)

Table No. (3) :Divisions Contribution to Annual Rate of Change for Apr 2012

(100=2007)

Seq.	Division	المساهمة في معدل التطور السوي للرقم القياسي العام %	المساهمة في معدل التغير السوي للرقم القياسي العام %	معدل التغير السوي %	نيسان	نيسان		
					2012	2011		
01	Food and Non-Alcoholic Beverages	48.3	4.2	13.3	156.2	137.9	30.059	01
02	Alcoholic Beverages&Tobacco	0.0	0.0	3.9	129.9	125.0	0.720	02
03	Clothes and Footwear	5.7	0.5	7.3	134.5	125.3	7.330	03
04	Housing, Water,Electricity & LPG	36.8	3.2	9.7	153.0	139.5	31.305	04
05	House Supplies , Appliances & Maintenance	2.3	0.2	2.7	118.5	115.4	6.377	05
06	Health	2.3	0.2	7.4	156.3	145.5	2.308	06
07	Transportation	-2.3	-0.2	-2.5	107.1	109.8	11.086	07
08	Communications	-1.1	-0.1	-3.5	83.7	86.7	2.926	08
09	Recreation and Culture	0.0	0.0	-0.8	105.4	106.3	1.619	09
10	Education	1.1	0.1	5.9	144.3	136.3	0.989	10
11	Restaurants	1.1	0.1	6.9	140.7	131.6	1.403	11
12	Miscellaneous Sevices and Goods	5.7	0.5	11.8	157.7	141.0	3.878	12
	General Index Number	100	8.7	8.7	142.4	131.0	100	00

2012

: (4)

Table No. (4) : CPI by Regions for Apr 2012
(100=2007)

Seq.	Division / Main Group / Sub Group				/	/
		South	Middle	Kurdistan		
01	Food and Non-Alcoholic Beverages	160.4	152.1	163.1		01
011	Food	162.7	154.0	164.9		011
0111	Cereals and their products	117.3	113.1	112.6		0111
0112	Meats	156.6	164.9	157.1		0112
0113	Fish	182.2	159.5	167.4		0113
0114	Yogurt, Cheese and Eggs	123.5	121.6	132.1		0114
0115	Oils and Fats	104.1	102.9	115.4		0115
0116	Fruits	158.9	155.5	195.3		0116
0117	Vegetables	203.4	190.1	214.7		0117
0118	Sugar and Sugar Products	146.4	134.6	149.4		0118
0119	Other Food Products	146.5	128.8	129.9		0119
012	Non-Alcoholic Beverages	106.5	111.5	123.9		012
02	Alcoholic Beverages&Tobacco	127.2	134.9	118.8		02
03	Clothes and Footwear	144.8	125.0	142.0		03
031	Clothes	143.8	125.4	143.1		031
0311	Cloth Fabrics	134.4	135.9	164.4		0311
0312	Sewing Clothes Services	156.1	150.8	150.2		0312
0313	Men's Readymade Wear	144.7	120.6	128.5		0313
0314	Ladies' Readymade Wear	131.3	122.7	131.0		0314
0315	Children's Readymade Wear	176.5	135.2	162.3		0315
0316	Clothes Cleaning	140.2	132.1	137.0		0316
032	Footwear	148.8	123.2	137.2		032
04	Housing, Water,Electricity & LPG	174.2	149.4	132.6		04
0411	Rent	181.4	167.0	130.4		0411
0412	House Maintenance and Services	133.7	106.9	147.4		0412
0413	Electricity and Water Supply	354.8	215.6	198.0		0413
0414	Fuels(Gasolen,kerosene and LPG)	96.7	78.7	108.0	()	0414
05	House Supplies , Appliances & Maintenance	121.9	114.0	127.7		05
051	Furniture Equipments	126.4	114.3	133.1		051
052	Home Appliances	119.3	113.8	123.6		052
06	Health	149.6	153.1	186.1		06
07	Transportation	115.2	102.7	98.1		07
08	Communications	85.5	77.2	101.2		08
09	Recreation and Culture	106.3	104.7	103.6		09
10	Education	147.4	144.4	131.0		10
11	Restaurants	141.0	133.8	155.3		11
12	Misc. Seviles and Goods	151.0	141.3	183.4		12
00	General Index Number	151.6	140.1	136.1		00

. ()

. ()

. ()

: (5)

Table No. (5) : CPI by Regions on Previous Month & Same Month of Previous Year
(100=2007)

Seq.	Division / Main Group / Sub Group	South		Middle		KURDSTAN		/	/
		2011	2012	2011	2012	2011	2012		
01	Food and Non-Alcoholic Beverages	139.2	157.1	133.1	151.9	149.3	160.0		01
011	Food	140.6	159.2	134.1	153.8	150.6	161.7		011
0111	Cereals and their products	111.5	117.1	115.2	113.1	121.2	112.6		0111
0112	Meats	149.2	155.1	157.1	164.6	150.7	157.5		0112
0113	Fish	155.9	177.0	128.8	156.3	148.4	168.7		0113
0114	Yogurt, Cheese and Eggs	110.8	122.8	109.3	122.8	121.7	134.7		0114
0115	Oils and Fats	100.5	103.2	97.6	103.2	105.3	115.0		0115
0116	Fruits	143.7	161.3	142.0	156.7	168.2	190.1		0116
0117	Vegetables	155.9	193.0	143.3	189.6	180.3	202.2		0117
0118	Sugar and Sugar Products	134.0	147.5	123.7	131.6	145.2	148.8		0118
0119	Other Food Products	142.5	147.1	126.5	128.1	116.5	130.3		0119
012	Non-Alcoholic Beverages	106.2	106.7	111.4	111.3	121.6	123.9		012
02	Alcoholic Beverages&Tobacco	124.2	129.2	129.3	134.9	111.1	118.8		02
03	Clothes and Footwear	132.0	144.3	116.9	124.5	133.2	142.8		03
031	Clothes	131.4	143.5	117.3	124.9	132.0	144.3		031
0311	Cloth Fabrics	118.6	134.2	123.1	134.2	132.0	163.2		0311
0312	Sewing Clothes Services	145.2	155.6	140.3	150.0	130.5	151.9		0312
0313	Men's Readymade Wear	132.1	144.0	116.1	119.9	115.9	131.0		0313
0314	Ladies' Readymade Wear	131.1	131.6	119.0	122.1	135.2	130.8		0314
0315	Children's Readymade Wear	137.6	175.8	115.3	135.4	162.4	166.9		0315
0316	Clothes Cleaning	131.1	140.6	133.3	132.1	137.3	138.9		0316
032	Footwear	134.5	147.7	114.5	122.7	138.3	136.7		032
04	Housing, Water,Electricity & LPG	139.5	166.2	142.5	147.0	123.8	132.7		04
0411	Rent	131.9	169.4	156.7	163.4	116.2	127.3		0411
0412	House Maintenance and Services	125.1	136.7	104.2	106.8	126.3	147.4		0412
0413	Electricity and Water Supply	363.1	354.2	217.7	214.2	224.8	219.8		0413
0414	Fuels(Gasolen,kerosene and LPG)	96.7	97.1	77.5	79.2	118.4	115.0	()
05	House Supplies , Appliances & Maintenance	117.1	121.9	112.5	113.9	122.1	127.2		05
051	Furniture Equipments	119.8	126.3	111.2	114.0	128.1	132.7		051
052	Home Appliances	115.6	119.4	113.2	113.8	117.6	123.1		052
06	Health	142.9	149.3	139.9	152.8	175.5	183.5		06
07	Transportation	116.3	115.4	103.5	102.0	103.0	97.9		07
08	Communications	88.5	86.5	81.5	77.2	99.1	100.5		08
09	Recreation and Culture	107.4	107.0	105.1	104.7	105.1	103.7		09
10	Education	135.0	147.4	137.9	144.4	125.0	130.9		10
11	Restaurants	129.5	141.4	127.7	132.9	139.8	155.3		11
12	Misc. Seviles and Goods	137.8	150.5	130.0	141.2	157.9	181.2		12
00	General Index Number	132.4	148.2	130.1	139.1	128.4	135.2		00

2012

: (6)

Table No. (6) :CPI for Iraq for Apr 2012 by Regions Compared with Previous Month & Same Month of Previous Year
(100=2007)

Seq.	Division / Main Group / Sub Group	South		Middle		KURDSTAN		/	/
		2011	2012	2011	2012	2011	2012		
01	Food and Non-Alcoholic Beverages	15.2	2.1	14.3	0.1	9.2	1.9		01
011	Food	15.7	2.2	14.8	0.1	9.5	2.0		011
0111	Cereals and their products	5.2	0.2	-1.8	0.0	-7.1	0.0		0111
0112	Meats	5.0	1.0	5.0	0.2	4.2	-0.3		0112
0113	Fish	16.9	2.9	23.8	2.0	12.8	-0.8		0113
0114	Yogurt, Cheese and Eggs	11.5	0.6	11.3	-1.0	8.5	-1.9		0114
0115	Oils and Fats	3.6	0.9	5.4	-0.3	9.6	0.3		0115
0116	Fruits	10.6	-1.5	9.5	-0.8	16.1	2.7		0116
0117	Vegetables	30.5	5.4	32.7	0.3	19.1	6.2		0117
0118	Sugar and Sugar Products	9.3	-0.7	8.8	2.3	2.9	0.4		0118
0119	Other Food Products	2.8	-0.4	1.8	0.5	11.5	-0.3		0119
012	Non-Alcoholic Beverages	0.3	-0.2	0.1	0.2	1.9	0.0		012
02	Alcoholic Beverages&Tobacco	2.4	-1.5	4.3	0.0	6.9	0.0		02
03	Clothes and Footwear	9.7	0.3	6.9	0.4	6.6	-0.6		03
031	Clothes	9.4	0.2	6.9	0.4	8.4	-0.8		031
0311	Cloth Fabrics	13.3	0.1	10.4	1.3	24.5	0.7		0311
0312	Sewing Clothes Services	7.5	0.3	7.5	0.5	15.1	-1.1		0312
0313	Men's Readymade Wear	9.5	0.5	3.9	0.6	10.9	-1.9		0313
0314	Ladies' Readymade Wear	0.2	-0.2	3.1	0.5	-3.1	0.2		0314
0315	Children's Readymade Wear	28.3	0.4	17.3	-0.1	-0.1	-2.8		0315
0316	Clothes Cleaning	6.9	-0.3	-0.9	0.0	-0.2	-1.4		0316
032	Footwear	10.6	0.7	7.6	0.4	-0.8	0.4		032
04	Housing, Water,Electricity & LPG	24.9	4.8	4.8	1.6	7.1	-0.1		04
0411	Rent	37.5	7.1	6.6	2.2	12.2	2.4		0411
0412	House Maintenance and Services	6.9	-2.2	2.6	0.1	16.7	0.0		0412
0413	Electricity and Water Supply	-2.3	0.2	-1.0	0.7	-11.9	-9.9		0413
0414	Fuels(Gasolen,kerosene and LPG)	0.0	-0.4	1.5	-0.6	-8.8	-6.1	()	0414
05	House Supplies , Appliances & Maintenance	4.1	0.0	1.3	0.1	4.6	0.4		05
051	Furniture Equipments	5.5	0.1	2.8	0.3	3.9	0.3		051
052	Home Appliances	3.2	-0.1	0.5	0.0	5.1	0.4		052
06	Health	4.7	0.2	9.4	0.2	6.0	1.4		06
07	Transportation	-0.9	-0.2	-0.8	0.7	-4.8	0.2		07
08	Communications	-3.4	-1.2	-5.3	0.0	2.1	0.7		08
09	Recreation and Culture	-1.0	-0.7	-0.4	0.0	-1.4	-0.1		09
10	Education	9.2	0.0	4.7	0.0	4.8	0.1		10
11	Restaurants	8.9	-0.3	4.8	0.7	11.1	0.0		11
12	Misc. Seviles and Goods	9.6	0.3	8.7	0.1	16.1	1.2		12
00	General Index Number	14.5	2.3	7.7	0.7	6.0	0.7		00

Table No. (7) : CPI by Governorates for

Apr 2012

2012

: (7)

(100=2007)

Basrah	Missan	Thi- Qar	Al-Muthana	Al-Qadisiya	Al-Najaf	Wasit	Kerbela	Babil	Salah Al-Deen	Baghdad	Al-anbar	Diala	Kirkuk	Nineveh	Duhouk	Erbil	Sulaimaniya		
166.5	170.4	164.3	168.2	161.0	166.5	141.4	155.8	153.5	162.5	145.3	168.3	154.6	155.7	155.7	163.9	169.5	158.8		01
169.0	172.3	167.6	171.0	162.7	169.2	142.8	157.2	155.6	165.6	146.9	170.4	156.3	157.2	158.0	165.7	171.1	160.8		011
129.6	117.6	111.4	120.1	121.7	109.5	104.9	126.2	107.8	125.3	105.0	133.0	111.4	139.9	113.2	123.4	107.0	108.5		0111
156.5	151.1	162.1	191.6	144.7	148.9	151.5	155.7	160.8	170.1	167.7	165.1	157.1	176.6	156.8	169.6	152.4	160.4		0112
245.7	183.4	153.6	175.7	143.0	172.0	162.6	149.4	210.5	236.7	158.8	156.3	152.5	190.5	132.6	170.4	155.7	176.8		0113
135.3	131.6	109.4	116.4	115.2	124.7	106.2	128.3	131.7	130.3	122.2	118.1	114.7	129.5	122.2	146.9	131.1	127.9		0114
112.0	113.8	100.7	100.9	102.2	104.1	108.3	104.0	103.0	135.8	100.2	115.7	93.5	115.5	104.2	113.5	110.9	124.8		0115
152.4	186.0	184.3	160.9	173.1	186.5	137.5	139.8	136.7	163.3	149.9	161.8	159.1	157.2	157.6	178.2	225.2	176.7		0116
182.5	228.9	230.4	206.3	217.9	239.2	166.8	197.2	181.6	202.8	172.4	217.0	198.7	174.7	219.7	203.8	225.1	212.6		0117
185.5	129.8	137.3	136.2	142.2	122.5	148.8	133.6	133.9	128.2	133.0	141.1	134.7	115.3	141.7	152.0	153.8	145.2		0118
198.4	189.8	129.3	150.5	141.9	140.5	97.3	131.4	128.6	127.7	126.9	142.5	114.0	147.7	126.1	124.8	161.2	116.5		0119
114.9	114.7	97.8	101.0	117.8	98.8	103.5	106.6	104.0	111.9	111.1	116.9	109.6	120.0	108.0	125.6	129.5	120.0		012
145.0	141.2	100.0	114.9	114.5	114.5	131.0	153.6	129.8	100.0	141.2	135.8	131.2	108.3	142.2	115.0	101.1	134.1		02
178.7	158.5	114.4	139.1	129.8	167.7	124.5	142.9	133.4	154.9	107.7	132.3	119.8	150.1	148.9	135.8	151.3	134.3		03
174.1	161.3	115.2	140.9	123.9	172.4	123.5	139.3	132.2	155.5	107.0	134.6	119.2	155.1	150.7	136.4	156.3	131.2		031
148.9	161.3	84.7	110.6	119.3	206.8	112.1	143.4	110.2	177.7	116.9	114.5	72.9	207.2	159.4	181.6	200.8	116.3		0311
170.2	189.0	143.6	117.1	125.8	163.0	129.1	135.8	187.3	149.3	131.9	128.5	155.7	265.4	187.5	122.4	179.3	131.9		0312
170.2	150.4	119.8	142.5	137.1	158.9	131.7	137.3	135.2	146.8	109.5	142.5	118.2	128.4	126.8	110.0	147.2	115.3		0313
173.5	148.9	114.7	140.6	108.5	143.9	114.0	121.3	112.7	157.3	104.8	125.0	116.2	159.4	140.4	130.6	125.1	136.9		0314
207.1	196.0	121.0	171.5	133.4	240.5	131.2	175.2	212.7	156.0	97.8	145.7	150.2	173.1	209.0	177.7	135.8	179.9		0315
	202.1	99.6	166.1	139.7	180.0	121.1	158.1	116.5	112.9	144.4	145.8	-	125.6	104.0	114.5	161.3	123.3		0316
195.4	147.8	111.4	131.5	155.5	151.7	128.5	157.4	138.2	153.0	109.8	125.1	122.1	134.3	141.5	133.2	128.9	146.3		032
228.3	129.9	183.0	145.1	150.3	155.0	140.4	133.3	159.8	118.5	120.7	172.9	251.4	164.6	163.8	134.0	142.8	122.2		04
249.6	126.9	180.6	140.7	142.5	162.1	144.8	129.0	170.7	111.0	130.0	213.8	312.3	157.3	182.7	114.2	150.7	118.2		0411
192.2	133.0	113.2	113.3	117.4	122.0	105.9	129.6	103.9	115.1	102.4	106.4	102.5	118.4	98.7	105.7	174.4	142.8		0412
536.7	220.1	564.7	628.9	342.2	248.6	183.8	280.9	322.1	334.1	179.6	220.8	210.2	393.7	312.1	449.6	87.8	209.8		0413
85.3	96.1	105.1	85.6	106.2	90.3	97.6	94.6	108.8	92.3	71.5	79.6	89.7	110.1	85.2	104.5	106.4	101.9	()	0414
139.6	122.8	109.5	117.9	114.7	131.6	108.5	117.1	119.6	121.6	107.8	114.5	116.3	124.5	125.8	125.7	131.4	119.1		05
158.6	129.9	116.3	119.0	109.0	125.6	109.0	120.7	124.6	122.6	102.7	121.3	123.0	116.0	132.1	147.4	143.7	112.6		051
133.1	119.5	104.9	117.2	118.9	135.7	108.3	115.1	115.2	121.0	110.1	110.5	112.8	129.5	121.4	113.9	122.9	124.5		052
174.1	143.5	140.0	128.8	129.5	135.7	124.4	144.7	154.8	192.7	151.6	171.4	119.9	194.4	144.2	159.9	252.6	158.7		06
123.2	131.3	104.8	123.8	104.0	142.3	126.1	106.9	111.3	107.8	101.9	119.5	107.3	109.7	99.3	95.2	94.4	122.8		07
84.3	96.8	70.2	96.5	83.5	91.5	81.3	89.9	91.5	74.3	77.6	99.3	84.0	90.2	71.9	96.3	96.3	108.3		08
110.0	114.6	101.8	99.8	108.4	116.5	109.0	102.4	104.0	94.8	109.2	101.1	116.4	100.2	93.9	113.4	107.3	98.7		09
172.0	205.9	140.7	130.2	120.5	143.6	107.5	145.2	137.5	109.8	126.5	174.2	147.4	170.1	170.8	134.3	150.1	121.0		10
153.5	138.5	125.8	164.5	117.0	112.2	149.4	157.2	131.1	167.8	130.8	182.3	123.0	154.2	120.7	125.3	162.3	160.6		11
164.8	146.5	115.6	140.3	166.2	151.2	144.0	164.8	170.9	162.3	121.2	144.7	139.4	153.2	141.9	162.4	196.8	179.9		12
176.0	144.9	150.9	144.3	139.3	150.7	133.0	137.4	142.8	137.2	125.8	158.8	182.9	150.2	144.3	133.1	141.4	136.0		00

(100=2007)

Seq.	Division / Main Group / Sub Group															/	/
		Average	Dec	Nov	Oct	Sep	Aug	Jul	Jun	May	Apr	Mar	Feb	Jan	weights		
01	Food and Non-Alcoholic Beverages	150.6									156.2	154.6	146.6	144.8	30.059		01
011	Food	152.3									158.2	156.5	148.2	146.3	28.754		011
0111	Cereals and their products	115.7									115.9	115.8	115.6	115.4	3.506		0111
0112	Meats	160.5									161.0	160.5	160.3	160.2	6.200		0112
0113	Fish	165.9									172.0	168.4	162.2	161.1	0.992		0113
0114	Yogurt, Cheese and Eggs	123.2									122.9	123.7	123.0	123.2	4.293		0114
0115	Oils and Fats	105.1									105.3	105.1	105.0	105.0	0.387		0115
0116	Fruits	159.6									162.8	163.4	156.7	155.4	3.069		0116
0117	Vegetables	179.3									198.0	192.3	166.5	160.4	8.039		0117
0118	Sugar and Sugar Products	138.9									140.1	138.8	138.4	138.3	1.576		0118
0119	Other Food Products	135.3									135.2	135.0	135.5	135.6	0.692		0119
012	Non-Alcoholic Beverages	112.3									112.3	112.3	112.4	112.2	1.305		012
02	Alcoholic Beverages&Tobacco	130.8									129.9	130.6	131.4	131.2	0.720		02
03	Clothes and Footwear	133.8									134.5	134.2	133.3	133.1	7.330		03
031	Clothes	134.1									134.7	134.5	133.7	133.4	5.775		031
0311	Cloth Fabrics	136.6									137.2	136.2	137.1	135.9	0.716		0311
0312	Sewing Clothes Services	149.6									151.5	151.1	148.6	147.1	0.214		0312
0313	Men's Readymade Wear	129.1									129.7	129.4	128.9	128.4	2.092		0313
0314	Ladies' Readymade Wear	126.8									127.4	127.2	126.3	126.2	1.836		0314
0315	Children's Readymade Wear	155.2									155.7	156.3	154.1	154.8	0.892		0315
0316	Clothes Cleaning	135.8									135.6	136.0	135.7	135.7	0.025		0316
032	Footwear	132.6									133.6	133.0	131.9	132.0	1.555		032
04	Housing, Water,Electricity & LPG	150.5									153.0	149.7	149.8	149.6	31.305		04
0411	Rent	159.7									163.8	158.3	158.3	158.3	21.221		0411
0412	House Maintenance and Services	120.9									120.6	121.6	121.1	120.2	2.124		0412
0413	Electricity and Water Supply	245.4									243.6	245.6	246.3	246.2	2.275		0413
0414	Fuels(Gasolen,kerosene and LPG)	89.5									88.7	89.8	90.0	89.4	5.685	()	0414
05	House Supplies , Appliances & Maintenance	118.2									118.5	118.4	118.2	117.7	6.377		05
051	Furniture Equipments	120.4									120.8	120.6	120.4	119.7	2.399		051
052	Home Appliances	116.9									117.1	117.1	116.9	116.5	3.978		052
06	Health	155.5									156.3	155.7	155.3	154.6	2.308		06
07	Transportation	107.0									107.1	106.8	106.9	107.0	11.086		07
08	Communications	84.2									83.7	84.0	84.2	84.7	2.926		08
09	Recreation and Culture	105.5									105.4	105.6	105.6	105.5	1.619		09
10	Education	144.2									144.3	144.3	144.2	144.1	0.989		10
11	Restaurants	139.7									140.7	140.3	139.0	138.6	1.403		11
12	Miscellaneous Sevices and Goods	157.0									157.7	157.2	158.6	154.3	3.878		12
00	General Index Number	139.8									142.4	140.8	138.4	137.5	100		00
	Index Number After Exclusion	138.7									139.9	138.5	138.3	138.0	100		